



JMS manufactures a range of blood bags, renal dialysis devices, AV fistula needles and infusion sets in a wide array of configurations.



Medison offers a range of ultrasound devices with superb image quality and 3-D technology. Specialised units for radiology, obstetrics and gynaecology, cardiology and other modalities are available.



Minntech International offers a range of dialyser reprocessing and cleaning devices. In addition, they offer certified re-usable high flux dialysers with polysulphone membranes.



Nihon Kohden offers devices in three main areas: critical care patient monitors, cardiology (with a fully scaleable solution for every application from high care to specialised critical care), cardiology devices (with a range of ECG and haemodynamic devices) and neurophysiology devices for EEG, EMG and evoked potential (EP).



Pro-Tech Services is the manufacturer and supplier of diagnostic sensors to the sleep medicine field.



Respironics is a manufacturer and distributor of respiratory products, for both the diagnostic and therapeutic markets, sleep diagnostic and therapy devices (CPAP/BiPAP), oxygen concentrators, invasive and non-invasive ventilation, and specialised neonatal products.



Rozinn offer a range of ambulatory ECG measuring devices and software Holter systems.



Sonosite manufactures a range of portable ultrasound devices. Their comprehensive range offers all modalities: obstetrics and gynaecology, vascular and cardiology, emergency medicine and line placement.



Winchart is a multi-discipline point-of-care anaesthesia record-keeping system, designed to capture clinical information from patient monitoring and other devices in the anaesthetic environment.



Ad-Tech Medical Instrument Corporation manufactures a range of intra-cranial electrodes and devices for the surgical treatment of epilepsy as well as devices for neurosurgery.

ALTERA

Altera manufactures a wide range of customisable and specification-built anaesthesia circuits, ventilation circuits, heated wire circuits, neonatal circuits. Other products include CPAP circuits, IPPB circuits, catheter mounts, oxygen therapy, anaesthesia masks, re-breathing bags and accessories.

Ambu

Ambu manufacture several respiratory and life-support devices and neuro-diagnostic solutions, as well as an excellent range of medical training aids.



Belco provides a range of dialysis machines that offer both conventional and modified haemodialysis treatments in a safe and efficient manner.



Biometrix Limited offers a large range of consumable products including chest and wound drainage systems, fully disposable invasive pressure transducer sets and a wide range of extension sets and adaptors.



Cardiac Science manufactures automatic external defibrillators (AEDs), to provide public access, healthcare, and rescue professionals extended capabilities for emergency treatment of sudden cardiac arrests.



Deltamed Medical manufactures a full range of Intravenous cannulae, available in both FEP and polyurethane from size 14-26 gauge, with straight hub, injection port and safety (needlestick prevention) configurations.



Dynamed (Galls) manufacture and supply trauma and emergency products and include immobilization/extrication equipment, ambulance stretchers, splints and resuscitators.



Ferraris manufactures lung function, exercise VO_2 devices offering an extensive product line-up from peak flow meters to whole body plethysmography, lung transfer function and ergospirometry.

HOSPILITE

Hospilite offers a range of operating surgical, outpatient and examination lights.



SSEM Mthembu Medical has a wide range of products to meet the requirements of the theatre staff and anaesthetist, from basic IV devices to the most sophisticated and advanced patient monitors and record-keeping systems.

Winchart is an independent record-keeping system, designed to automatically capture physiological data from patient monitoring systems. The power of the system is the ease of interface to other devices and information systems in the healthcare environment.

Nihon Kohden's Cardiolife range of biphasic defibrillators (acti-biphasic) offer colour TFT displays, multi-parameter monitoring, internal and external, adult and paediatric paddles, standard AED and external pacing facilities. The Lifescope range of patient monitoring systems ensure that all anaesthetic gas and vital signs information is monitored and easily retrievable. This is facilitated by a selection of hardware, wireless networking solutions and bedside monitor options.

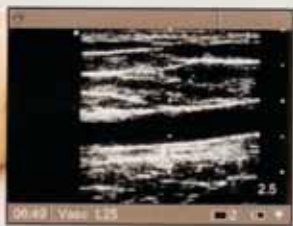
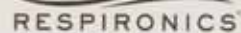
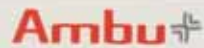
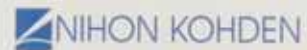
Sonosite and **Medison** provide portable ultrasound giving the anaesthetist the assurance of correct catheter placement and nerve blocking.

Respironics' NICO₂ facilitates non-invasive cardio respiratory monitoring in the OR, providing continuous lung feedback and cardiac output.

Biometrix invasive pressure monitoring sets are available in single, double and triple configurations. These products are custom packed for use in a theatre environment.

Hospilite offers a wide range of Operating Surgical, Outpatient and Examination Lights to the theatre environment.

Deltamed's range of IV cannulae is available in all configurations, including safety and injection port. Neo Delta Ven 2 and Delta Ven T are available for the administration of drugs during anaesthesia, both in FEP and polyurethane.



Anaesthetic Record Keeping Systems
 • Patient Monitors • Intra Venous Catheters • Defibrillators • Respiratory Management • Non-invasive Cardiac Output



ROZINN

ADD TO THE
MEDISON

SonoSite

NIHON KOHDEN

CARDIAC SCIENCE

RESPIRONICS

BICMETRIX

With ECG and EP devices, and the superb quality and ease of use these devices offer, the cardiologist is equipped with the diagnostic tools to function optimally.

Rozinn's range of Holter/ambulatory ECG systems are based on the very latest platforms the IT industry has to offer. Their Holter analysis systems have an overwhelming global acceptance.

Medison offers all the ultrasound diagnostic tools a cardiologist needs. The Accuvix, SA-9900 and SA-8000 feature hi-resolution imaging with Harmonic Imaging, TDI and calculation packages are standard.

Sonosite is a hand-held mobile ultrasound system combining high-performance and usability in a performance lightweight package. The Titan/Micromaxx features high-resolution imaging with harmonics and all software calculations.

Nihon Kohden's patient monitor (Lifescope), defibrillator (Cardiolife), and ECG (Cardiofax) devices all encompass Cardiofax easy to use, graphical interfaces, and exceptionally accurate parameter measurement, making these devices the product of choice in many practices and institutions. This, coupled with exceptional reliability, allows us to effectively service remote locations. Patient monitoring devices are supplied standard with arrhythmia, ST analysis and online storage capabilities.

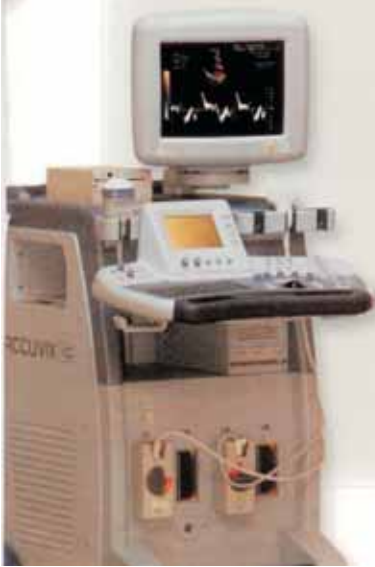
Cardiac Science offers a range of automatic external defibrillators (AEDs). This technology automates cardioversion and increases survival rates dramatically.

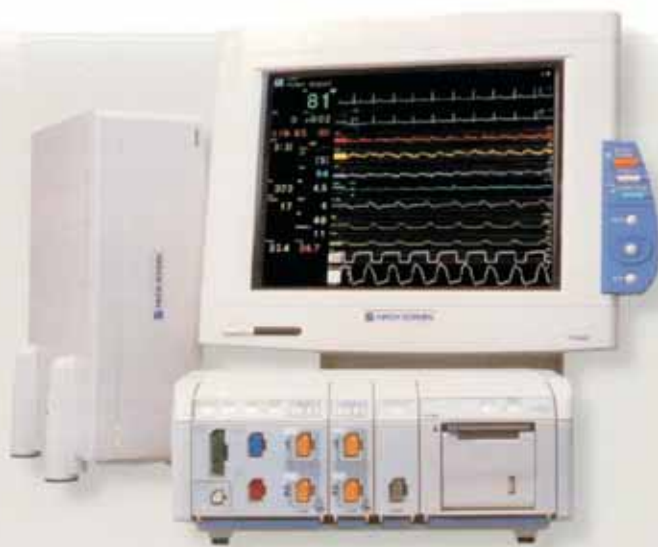
Respironics' NICO, facilitates unparalleled Non Invasive Cardio Respiratory monitoring in the ICU, providing continuous lung feedback for ventilated patients and non-invasive cardiac output.

Biometrix disposable pressure monitoring kits (DPT) are custom packed units and are compatible with all needle devices. Arm and pole mounted sets are available for easy use. Single, double and triple kits are available in a variety of configurations.



AED's • Angiographic Procedure Packs • Cardiac Ultrasound Systems • Cardiac Telemetry Monitoring Systems • Haemodynamic Monitors for Angio Procedures • Defibrillators • ECG Machines • ECG Stress Testing Systems with Ergometer/Treadmill • EP Monitoring Systems • Non-Invasive Cardiac Output





 NIHON KOHDEN

 BIOMETRIX

 DELTA MED
MEDICAL DEVICES

 JMS

 RESPIRONICS

 Ambu

 ALTERA

SSEM Mthembu Medical aims to supply innovative and cost-effective solutions to this stressful and testing area of hospital work.

Nihon Kohden's Lifescope patient monitors are perfectly suited to the critical care environment. These user-friendly devices give the medical professional all the information required. Hardwired and wireless networking solutions and a comprehensive range of patient monitors ensure that accurate data is retained and available when needed. Nihon Kohden's Lifescope, Cardiofax ECG and Cardiolife defibrillator range are networkable and compliant with patient information data networks.

Biometrix disposable pressure monitoring sets are custom packed kits compatible with all needle devices. Arm and pole mounted, single, double and triple sets are available for easy use. Continuous flushing device accurately controls fluid volume for adult and paediatric patients.

Deltamed's range of IV cannulae is available in all configurations including safety and injection port.

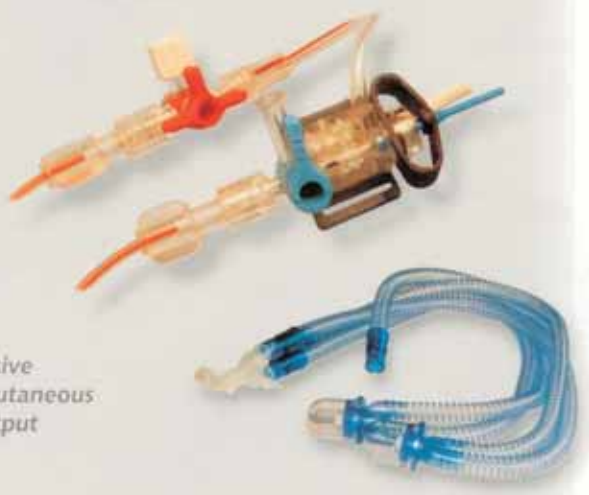




Respironics non-invasive and combination ventilators (BiPAP-Vision® and Esprit®) are ideally suited to giving the physician the flexibility to best diagnose and treat patients. Respironics's patented BiPAP® non-invasive technology reduces the need to incubate patients, resulting in a better patient outcome, whilst accelerating the weaning process. The NICO2 facilitates continuous lung feedback for ventilated patients and non-invasive cardiac output. Transcutaneous CO₂ and O₂ is also offered.

Ambu provides the ICU environment with a wide range of products including resuscitators, double bag systems, suction devices, portable ventilators and training manikins.

Altera supplies ventilation circuits, heated wire circuits, neonatal circuits which are all available in various tubing types and different configurations.



Critical Care Patient Monitoring Systems • Defibrillators • Invasive Pressure Monitoring Kits • Pressure bags • Ventilation • Transcutaneous Monitoring • Respiratory Monitoring • Non-invasive Cardiac Output



We offer pre-hospital emergency services and rescue services the equipment, consumables and support needed, as well as devices for cardioversion, immobilization and extrication equipment, splints and resuscitators.

Ambu develops, produces and markets diagnostic life-support equipment and respiratory management systems.

DynaMed offers a huge selection of emergency and related devices.

Cardiac Science AED (automatic external defibrillator) G3 range is set to simplify cardioversion. It is widely accepted and used by public and by emergency services and medical professionals, throughout the world.

Sonosite's and **Medison's** portable ultrasound system puts high-resolution imaging with colour Doppler into the hands of the trauma specialist.

Nihon Kohden's Cardiolife range of biphasic defibrillators (acti-actibiphasic) with colour screens, (biphasic) multi-parameter monitoring, internal and external, adult and paediatric paddles, standard AED and external pacing facilities, ensure peace of mind for the clinician.

Ambu 

DYNAMED

SonoSite

THE IT ALL
MEDISON

NIHON KOHDEN

 **CARDIAC SCIENCE**



AED's • CPR Manikins • Suction Units • Defibrillators • Laryngeal Mask • Head Blocks • Portable Monitors • Portable Ventilators • Portable Ultrasound • Incubation Trainer • Resuscitation, Immobilization & Extrication Equipment



RESPIRONICS™

With escalating hospital costs and the comfort of home in mind, SSEM Mthembu Medical is committed to providing the best and most reliable devices for a better quality of life for the home-based patient. We offer solutions in the respiratory realm including oxygen concentrators, CPAP, BiPAP® and home ventilation devices.

In addition, recent options for disease management of asthma and COPD are available.

Respironics® is recognised internationally as the pioneer and market leader in the respiratory sleep disorder therapy market. These products are designed to treat the ever growing number of diagnosed OSA (obstructive sleep apnoea) patients. Products range from entry level CPAP, revolutionary CPAP with C-Flex™, cutting edge auto CPAP with C-Flex, to BiPAP® systems. These systems are available on purchase or rental options. Home BiPAP® ventilation products provide leading patented technology for the non-invasive and invasive treatment of respiratory and neuro-muscular diseases. This technology improves patient quality of life and helps minimise hospitalisation. The Millennium oxygen concentrator product complements our home care range, providing a reliable, low maintenance option for patients requiring oxygen therapy.

Ferraris's range of home asthma and COPD management products provide an affordable option to assist the physician and patient to manage illness.



Home Ventilation • Oxygen Therapy • CPAP Systems • C-Flex™ • BiPAP®



We offer multi-parameter monitors, diagnostic ultrasound, pressure ventilation and a selection of consumables to the Neonatal ICU.

Nihon Kohden's Lifescope patient monitors are lightweight, accurate and designed to meet the specifications of a neonatal ICU. Automatic identification of the presence of neonatal cuffs and pressure measurement adjustment with a full range of neonatal cable connectors and cuffs, are available.

Respironics® Espirit™ ventilator offers a complete ventilation solution for the neonate. The NeoPAP™ is a dedicated neonatal CPAP with revolutionary, integrated humidification and market leading leak compensation, complemented by its unique range of patient interfaces assisting newborns to breathe.

Transcutaneous CO₂ and O₂ monitoring provides critical non-invasive monitoring where frequent blood sampling is not practical.

Respironics's Childrens Medical Ventures division provides leading developmental care products for premature neonatal patients, which helps to facilitate natural development.

Sonosite and **Medison** makes the option of advanced portable ultrasound in the neonatal ICU a reality.

Delta Med has a selection of intra-venous catheters, including 26 gauge, in FEP and polyurethane, umbilical pressure monitoring, and TPN and infusion filters, suitable for neonatal use.



Capnographs • Patient Monitoring Systems • Pressure Monitoring and IV Filters • Ventilation • CPAP • Transcutaneous CO₂ & O₂ Monitoring

NIHON KOHDEN

RESPIRONICS®

THE #1 RATED
MEDISON

SonoSite.

DELTA MED
MEDICAL DEVICES

BIOMETRIX

JMS

JMS**MINNTECH**
INTERNATIONAL**bellco**

SSEM Mthembu Medical's nephrology division is dedicated to supplying the dialysis market with a comprehensive range of leading international products. Internationally trained specialists provide clinical and technical support.

We are a proud distributor of the **Bellco** dialysis machines, as well as **JMS** bloodlines, and AV fistula needles. The Bellco dialysis machine offers patients a safe, efficient treatment. Features such as controlled ultra filtration, audiovisual alarms on an easy-to-read screen and the ease of maintenance, makes the dialysis machine a remarkable operating device.

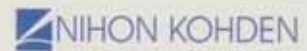
SSEM Mthembu Medical distributes JMS haemodialysis blood tubing sets, a standard blood line that can be used for the all dialysis machines. The JMS AV fistula needle is designed to ensure smooth cannulation with minimal pain.

SSEM Mthembu Medical offers the dialysis market the option of dialyser re-use. Reprocessing equipment is supplied by **Minntech**, the world leaders in dialyser re-use.

The Renalog RM is an innovative new generation product. The Renalog II Data Management System is Windows-based and allows the process of re-using to be safe, efficient and controlled. Renalin is the leading reprocessing sterilant world-wide. Minntech supply certified re-usable hollow fibre dialysers, a high flux, polysulphone membrane offering high clearance rates.



Dialysis Machines • AV Fistula Needles • Haemodialysis Blood Tubing Set • Renal Data Management System & Accessories • High Flux Polysulphone Dialysers



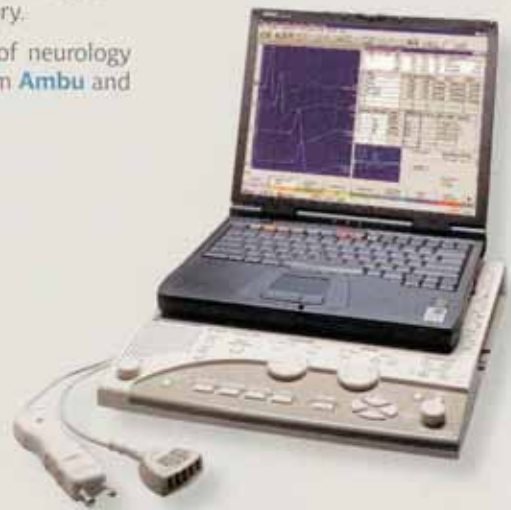


Over the past 19 years SSEM has focused on distributing the **Nihon Kohden** range of neurology products providing solutions of international quality. It offers a complete range of Windows XP based EEG, EMG and long term epilepsy monitoring solutions in a variety of configurations, from 2 to 192 channels.

With Nihon Kohden's long history, pioneering technology, reliability and service backup, our neurology products have become the product of choice in the South African market.

The **AD-Tech** range of subdural grids and IOM consumables are the perfect match for long term EEG monitoring and epilepsy surgery.

There is also an extensive range of neurology consumables for EEG and EMG from **Ambu** and Nihon Kohden.



EEG Machines & Consumables • EMG Machines & Consumables • EMG Needles • Long Term Epilepsy Monitoring Systems • Inter Operative Monitoring (IOM) Machines & Consumables • Ambulatory EEG

See it All
MEDISON

SonoSite

Medison's "total solution" selection of ultrasound devices, provides the OBGYN with the power of choice at an affordable price.

Medison offers the user an advanced ultrasound diagnostic tool with the latest technology across the range.

Their systems offer cutting edge technology at any level: the digital channel black and white ultrasound, with spectral Doppler, portable colour Doppler, the mid to high-end LIVE3D (4D) and the premium system, offering LIVE3D (4D) and XI.

Ultrasound Technologies provides CTGs for single and twin monitoring, including uterine contractions and other advanced features. foetal Dopplers provide LCD display and audio indication of the foetus heart rate.

Sonosite provides hand-held colour Doppler, designed for an examination anywhere, any-time.

Single-use disposable vaginal speculums at throw away prices. Each unit is individually packed in sterile packaging, available in sizes small, medium and large.

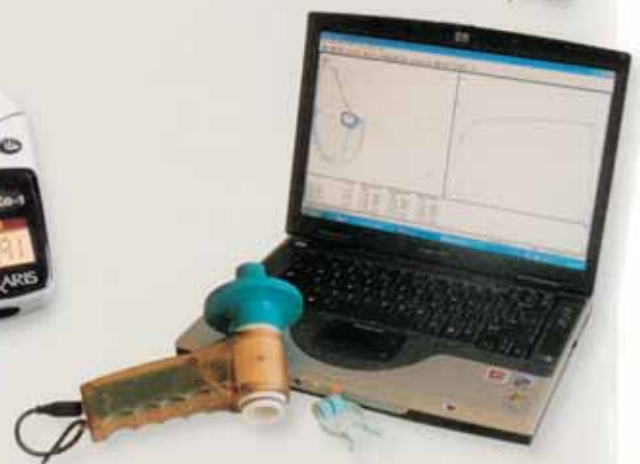


Cardiotocographs • Foetal Dopplers • Ultrasound Systems • Disposable Vaginal Speculum



SSEM Mthembu has since inception been involved with the South African pulmonology market, providing technical expertise and value-added support.

Ferraris offers a complete range of respiratory diagnostic products from digital peak flow devices to high end spirometers. Tests available are: flow volume, metacholine challenges, body plethysmographs, diffusion tests, nitrogen wash-outs, closing volumes and VO2 max exercise/ECC/ergospirometry. Digital peak flow and FEV1 meters with a test storage capacity give asthma management an edge at a surprisingly affordable price. The Ferraris spirometry range of products offered in portable or PC-based configurations, cater for all medical environments.



Asthma Management • Flow Volume Testing • Body Box and Diffusion • Vo2 Measurement

RESPIRONICS

NIHON KOHDEN

PRO-TECH

Given our proven ability in the neurology and respiratory fields, it is natural for SSEM Mthembu Medical to offer sleep diagnostic equipment.

There are numerous flexible options in all customer categories including **Respironics'** sleep apnoea screening and ActiWatch devices.

We offer high end polysomnographic systems with video monitoring and titration capabilities.

We provide upgrade paths to our **Nihon Kohden** clients to enable full polysomnographic functionality for multi-disciplinary practices.

These products are complemented by a complete range of **Pro-Tech** sleep sensors and consumables.



Sleep Apnoea Screening Devices • Polysomnographic Systems • Sleep Diagnostic Consumables

RESPIRONICS

ALTERA

Ambu

SSEM Mthembu Medical offers the complete range of **Respironics**® ventilation products and consumables.

BiPAP® Vision™ is the dominant standard in non-invasive ventilation, and its uncompromising performance has maintained its position as the leader in this field.

The Esprit™ brings award-winning non-invasive technology to the traditional ventilator. Powered by its high performance constant speed 3 stage blower, it meets neonatal, paediatric and adult patient demands at all times.

Respironics' commitment to the ventilation market has resulted in numerous patented technologies including: AutoTrak™, FlowTrak™, unique 72 hour all parameter and alarm trending, BabyTrak™, comprehensive respiratory mechanics and graphic options.

The Respironics NeoPAP™ is a dedicated neonatal CPAP system with revolutionary, integrated humidification and market leading leak compensation. Its unique range of patient interfaces assist newborns to breathe.

We offer Respironics' hospital and emergency CPAP drivers and accessories.

Ambu markets a pneumatic, automatic hand-held portable ventilator.

We have the most comprehensive range of ventilation and CPAP hospital masks, compatible with all appropriate ventilators, complemented by **Altera** ventilation consumables.



Combination Ventilators • Non-invasive Ventilators • Adult & Neonatal CPAP Systems • Respiratory Monitoring Systems • Ventilation Masks • Ventilator Circuits • Nebulizers • Portable Ventilators